



*Extend the
business value
of Veeva
Solutions*



Overview

V-Assist by Spotline is an enterprise-grade AI-powered digital assistant built to accelerate productivity, compliance, and decision-making across the Veeva ecosystem. Designed specifically for regulated life sciences environments, V-Assist provides in-the-moment guidance, embedded training, and contextual support—freeing regulatory, clinical, and quality teams to focus on strategic work, not searching for information.

Whether it's enabling faster regulatory submissions, streamlining clinical trial operations, or improving audit readiness, V-Assist delivers real-time guidance directly within Veeva applications.

Now enhanced with **Spotline AI Insights**, V-Assist integrates directly with **Veeva Applications via Direct Data APIs**—unlocking intelligent analytics and actionable insights embedded right into your business processes.

Key Features & Benefits

In-Context Training & Guidance

- Delivers SOPs, work instructions, and training content directly within Veeva workflows
- Accelerates onboarding and enhances user confidence across global teams

Real-Time, Context-Aware Assistance

- Uses intelligent prompts to offer accurate, contextual responses based on user role and location within Veeva applications
- Minimizes helpdesk queries and workflow delays

Workflow Efficiency

- Reduces time spent searching for documents and training materials
- Improves execution speed on submissions, quality processes, and clinical workflows

AI-Driven Knowledge Delivery

- Pulls from internal documentation, SOPs, and FAQs to deliver the right content in real-time
- Keeps information current and aligned with evolving regulatory practices

Supported Veeva Applications

V-Assist is compatible with the following Veeva Applications:

Vevea RIM

Submissions,
Registrations,
Submissions
Archive, Publishing

Vevea Clinical Operations

(eTMF, CTMS)
and other related
modules

Vevea Quality

QMS,
QualityDocs,
Station Manager

Vevea Safety

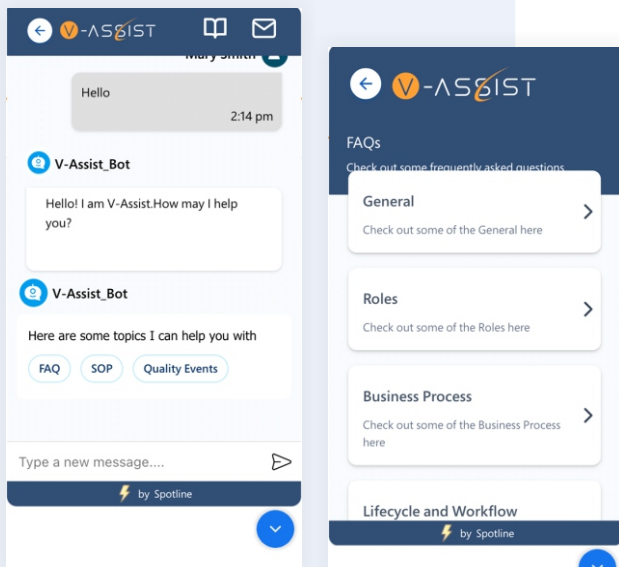
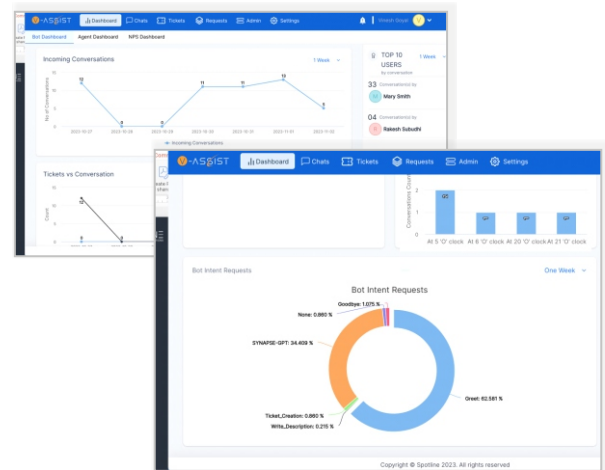
Safety,
SafetyDocs

Vevea Commercial

Vault CRM,
PromoMats,
MedComms

Technical Integrations & Deployment Options

- Integrates with Veeva Applications via Veeva's Direct Data APIs
- Supports API-based connections to ServiceNow ITSM
- Configurable and scalable deployment in customer-hosted cloud or public cloud environments
- Veeva AI Partner selected integration for secure and compliant use in regulated environments



Spotline is a Veeva-certified partner specializing in intelligent automation and enterprise productivity solutions tailored for the life sciences industry. With deep experience implementing Veeva applications and GxP-compliant solutions, Spotline helps life sciences organizations maximize the value of their technology investments.

Customer Results

Reduced time
to find SOPs
and training by
60%

Increased
regulatory
submission team
productivity by
30%

Enhanced user
satisfaction with
Veeva through
intuitive, real-
time support

Get Started

Discover how V-Assist can help your regulatory, quality, and clinical teams work smarter—right inside Veeva.

Contact us at info@spotline.com or visit www.spotline.com/v-assist to schedule a demo.